

StarWind Virtual SAN[®] Management Console “Thin” Client Configuration Guide

2024

TECHNICAL PAPERS



Trademarks

“StarWind”, “StarWind Software” and the StarWind and the StarWind Software logos are registered trademarks of StarWind Software. “StarWind LSFS” is a trademark of StarWind Software which may be registered in some jurisdictions. All other trademarks are owned by their respective owners.

Changes

The material in this document is for information only and is subject to change without notice. While reasonable efforts have been made in the preparation of this document to assure its accuracy, StarWind Software assumes no liability resulting from errors or omissions in this document, or from the use of the information contained herein. StarWind Software reserves the right to make changes in the product design without reservation and without notification to its users.

Technical Support and Services

If you have questions about installing or using this software, check this and other documents first - you will find answers to most of your questions on the [Technical Papers](#) webpage or in [StarWind Forum](#). If you need further assistance, please [contact us](#) .

About StarWind

StarWind is a pioneer in virtualization and a company that participated in the development of this technology from its earliest days. Now the company is among the leading vendors of software and hardware hyper-converged solutions. The company’s core product is the years-proven StarWind Virtual SAN, which allows SMB and ROBO to benefit from cost-efficient hyperconverged IT infrastructure. Having earned a reputation of reliability, StarWind created a hardware product line and is actively tapping into hyperconverged and storage appliances market. In 2016, Gartner named StarWind “Cool Vendor for Compute Platforms” following the success and popularity of StarWind HyperConverged Appliance. StarWind partners with world-known companies: Microsoft, VMware, Veeam, Intel, Dell, Mellanox, Citrix, Western Digital, etc.

Copyright ©2009-2018 StarWind Software Inc.

No part of this publication may be reproduced, stored in a retrieval system, or transmitted in any form or by any means, electronic, mechanical, photocopying, recording or otherwise, without the prior written consent of StarWind Software.

Introduction

This document describes the deployment and configuration processes of the web client of StarWind Management Console.

The Management Console is the Graphical User Interface (GUI) part of the program that monitors and controls the storage-related operations (for example - creation of devices on the available target servers). After its installation, StarWind Management Console connects to StarWind Service remotely.

The “thin” client allows the user to manage StarWind-based infrastructure by connecting to the Management Console from any HTML5-capable web browser on PC or Android, iOS or Windows mobile device.

A full set of up-to-date technical documentation can always be found [here](#), or by pressing the Help button in the StarWind Management Console.

For any technical inquiries, please visit our [online community](#), [Frequently Asked Questions](#) page, or use the [support form](#) to contact our technical support department.

Web Console Components

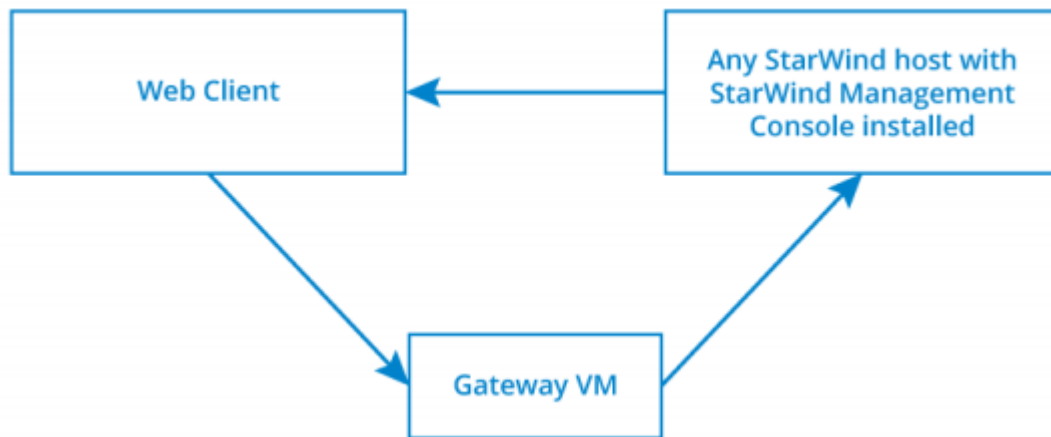
- Gateway Virtual Machine

Gateway virtual machine accepts incoming HTTP connections and transforms them into RDP sessions.

- Target Server

Physical host or VM that has LAN/Internet access to StarWind Nodes and has StarWind Web Console feature installed.

Note: StarWind Node can also act as Target Server if there is Web Console feature installed.



Gateway Virtual Machine requirements

Gateway VM is available for download and comes as OVF or VHDX pre-built image.

Download link: <https://www.starwind.com>

Virtual machine requirements:

Hard drive: 10 GB

CPU: 1 vCPU

RAM: 512 MB

Deployment Quick Steps

1. Download the Gateway VM template.

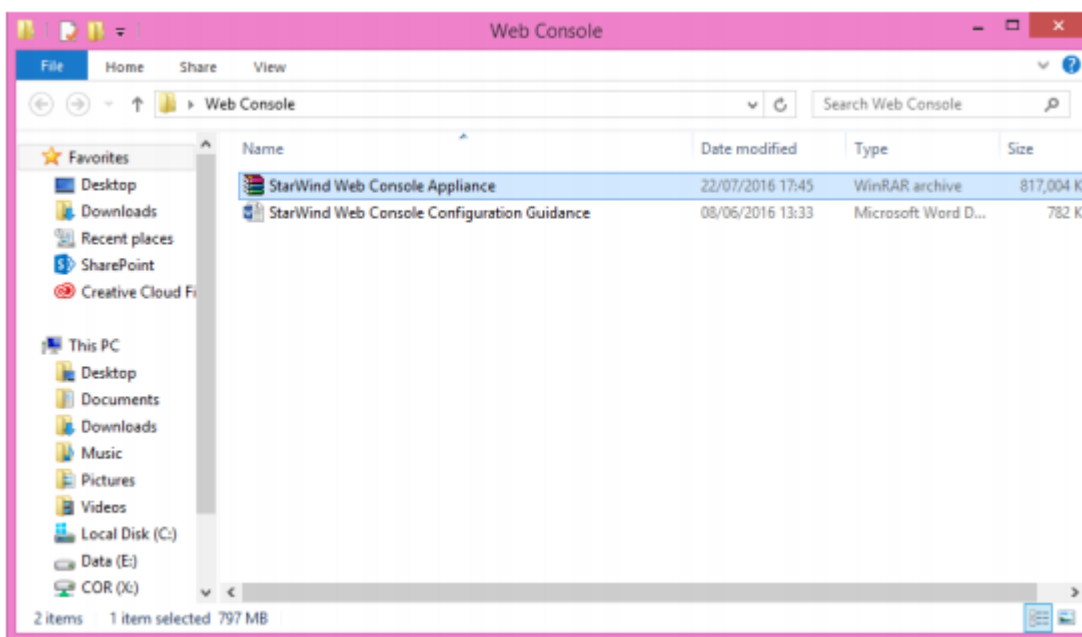
<http://starwind.com/tmplink/StarWindManagementConsoleWebOVF.zip> for OVF template.

Open Virtualization Format is an open standard for packaging and distributing virtual appliances or, more generally, software to be run in virtual machines.

<http://starwind.com/tmplink/StarWindManagementConsoleWebVHDX.zip> for Hyper-V template.

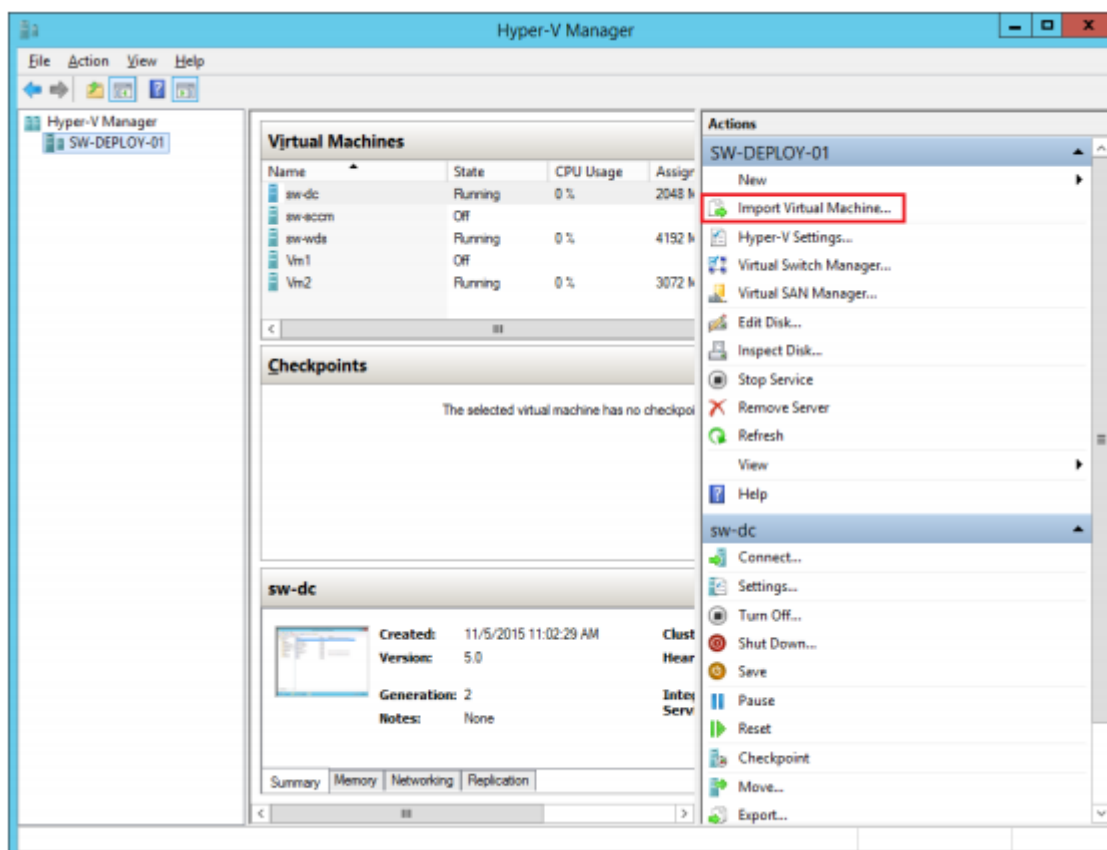
VHD (Virtual Hard Disk) is a file format which represents a virtual hard disk drive (HDD). It may contain what is found on a physical HDD, such as disk partitions and a file system, which in turn can contain files and folders. It is typically used as the hard disk of a virtual machine.

2. Extract virtual machine files

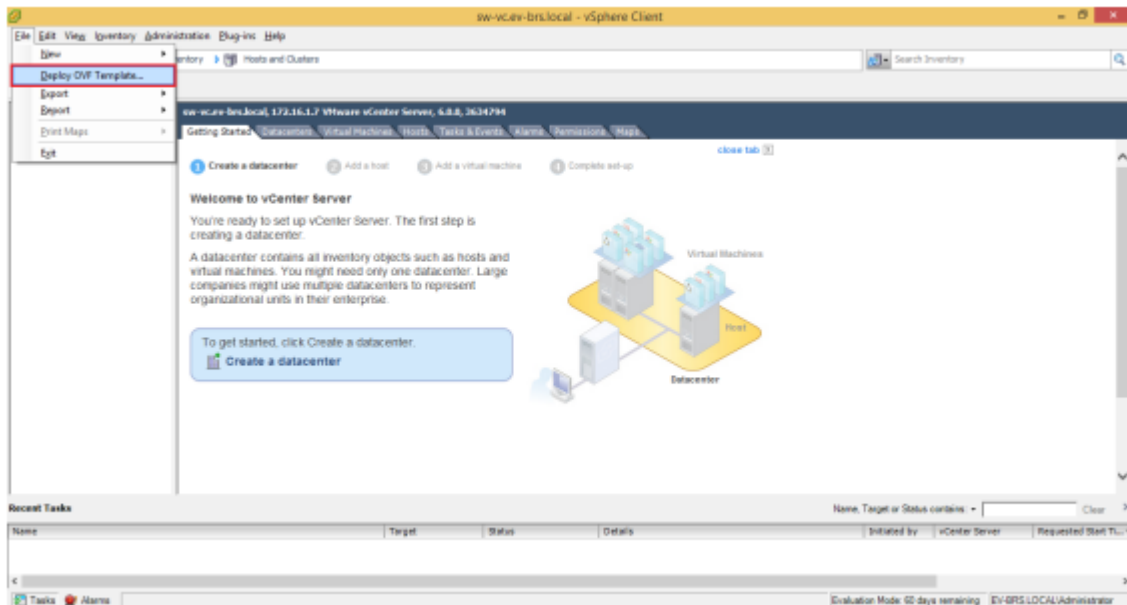


3. Deploy virtual machine to hypervisor of your choice

- Use “Import Virtual Machine” for Hyper-V

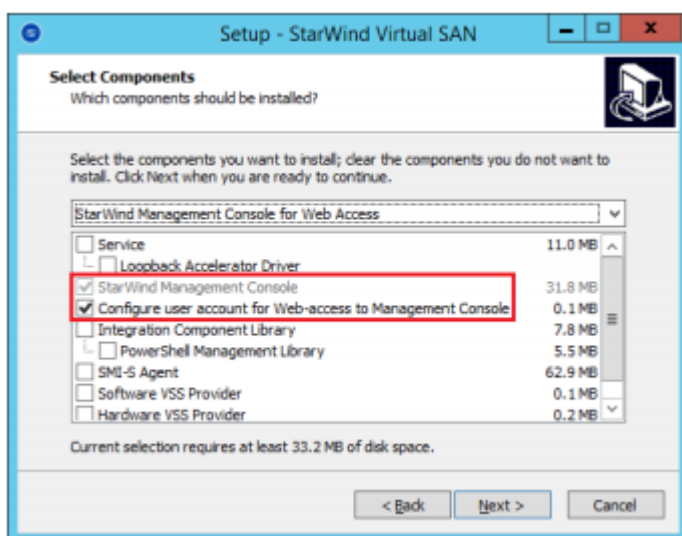


- Use “Deploy OVF template” for VMware

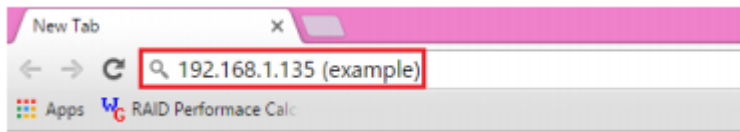


4. By default, Gateway virtual machine will receive automatic IP address via DHCP. It is recommended to create a DHCP reservation, configure DNS resolving and set a static IP address for this VM. In order to access StarWind Web Console outside from your local network, Gateway virtual machine must have Internet access.

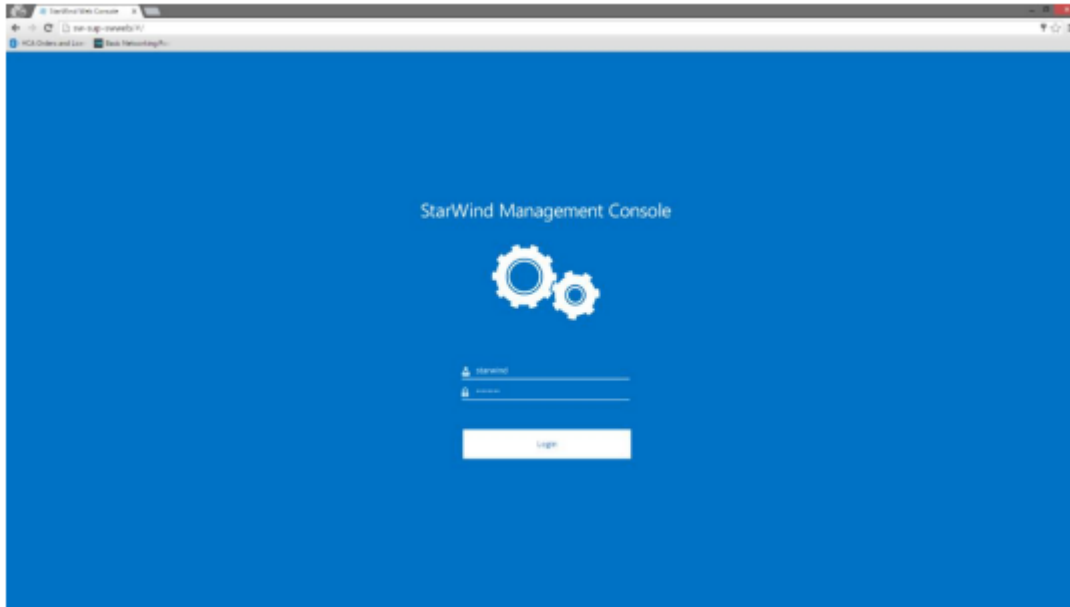
5. Install StarWind Web Console feature using StarWind Virtual SAN Installer Wizard. You can install that to any Windows-based physical host or virtual machine that has LAN access to your StarWind Virtual SAN servers. It is recommended to install StarWind Web Console feature on StarWind Virtual SAN servers to keep the configuration simple.



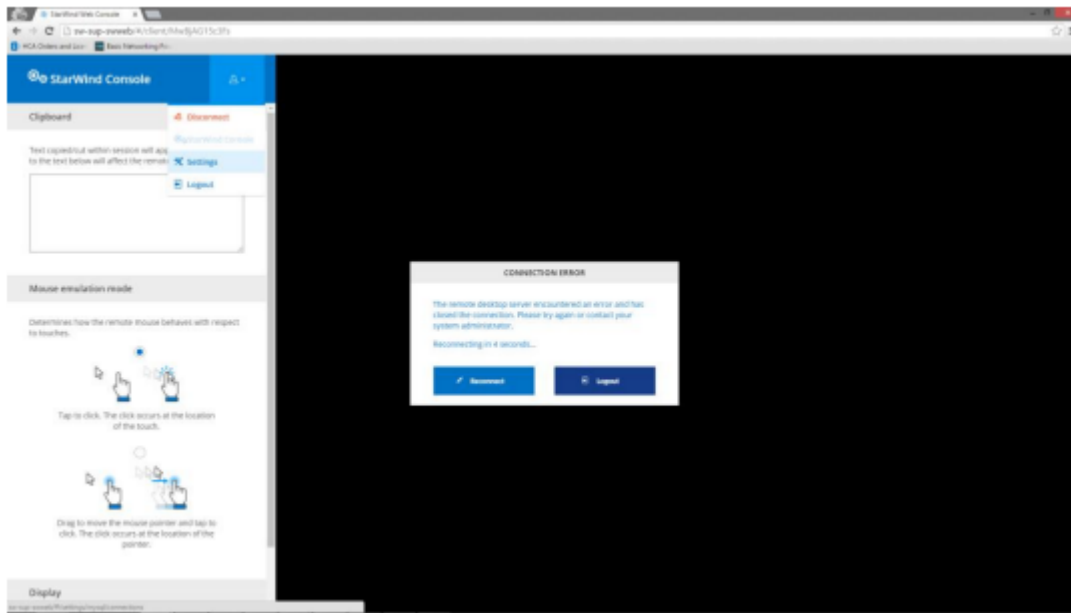
6. Open your web browser and enter IP address or hostname of the Gateway VM.



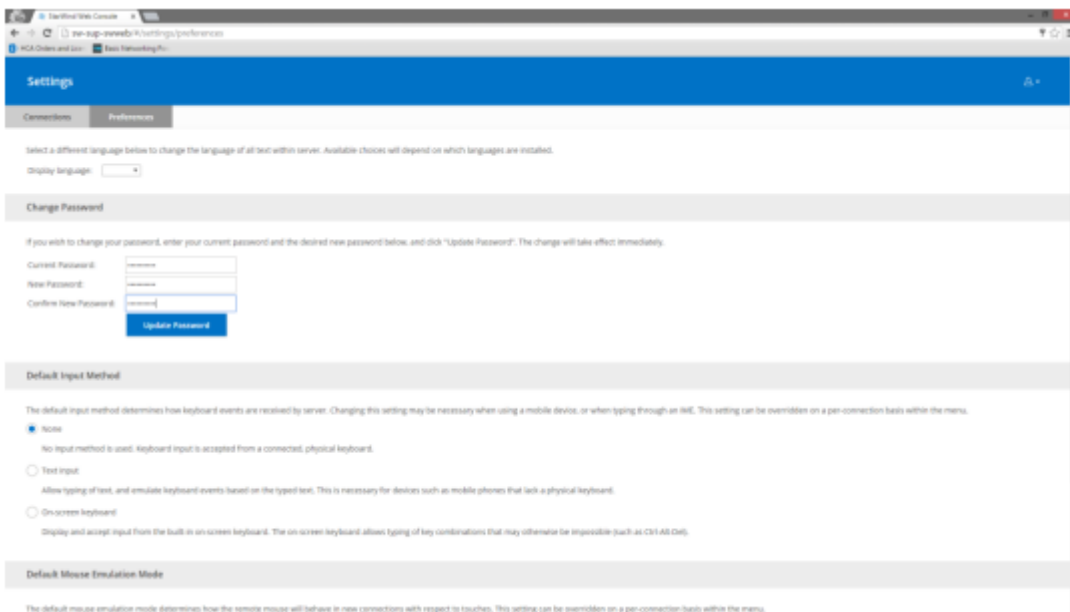
- 7. Enter default credentials and press “Login” button:
Username: starwind
Password: starwind



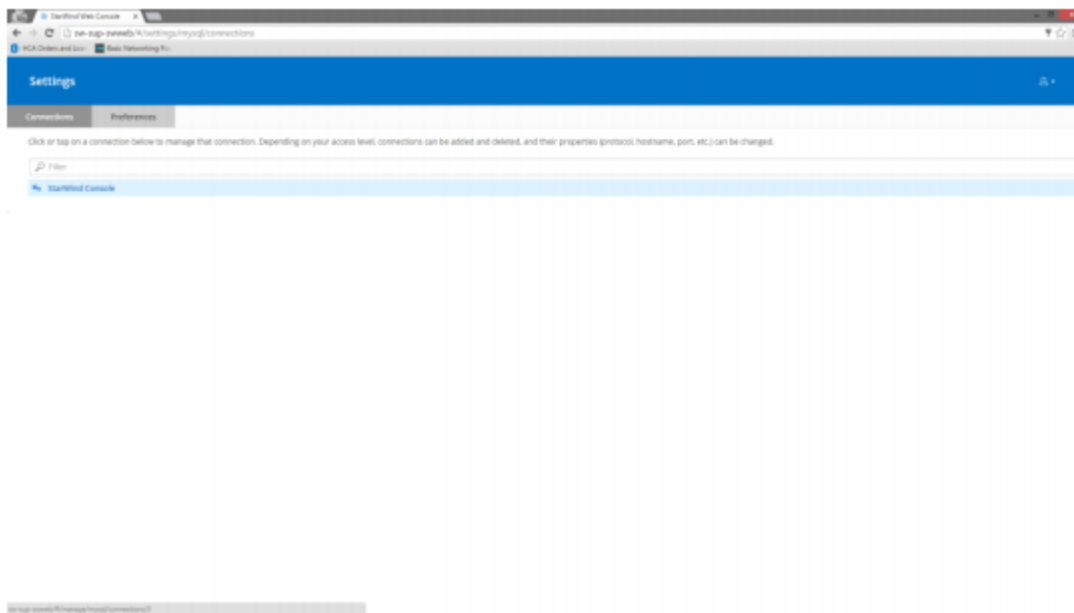
- 8. After successful login, press “ALT+CTRL+SHIFT” combination.
- 9. Navigate to “Settings” menu using pop up sidebar:



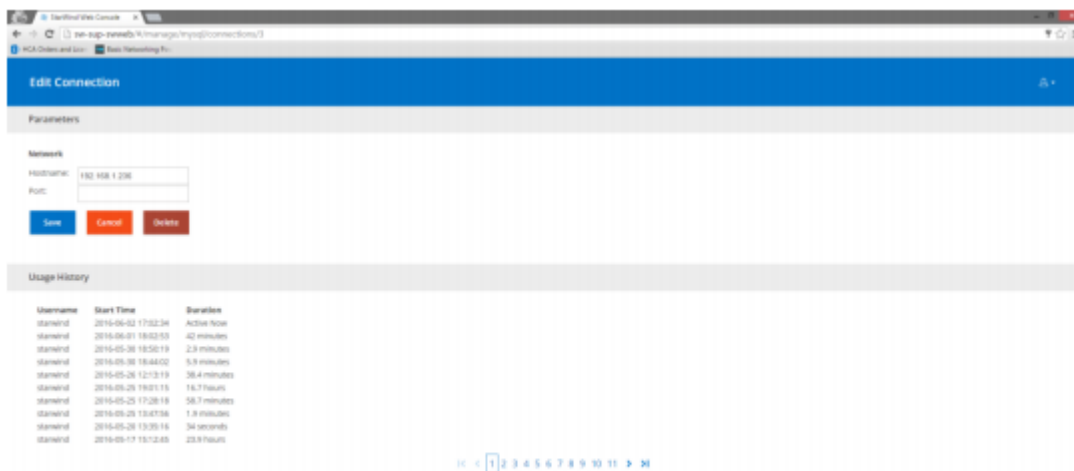
10. Optionally, navigate to “Preferences” screen and change the default password:



11. Navigate to “Connections” tab and select StarWind Console settings.










12. Specify the IP address of the Target Server and leave the “Port” value unchanged if default RDP port is used. Set corresponding “Port” value if you have configured a custom RDP port on the Target Server. Save changes.



After finishing the Gateway VM configuration, you will be able to connect to the Target Server by following Gateway VM URL.

Contacts

US Headquarters	EMEA and APAC
 +1 617 829 44 95	 +44 2037 691 857 (United Kingdom)
 +1 617 507 58 45	 +49 800 100 68 26 (Germany)
 +1 866 790 26 46	 +34 629 03 07 17 (Spain and Portugal)
	 +33 788 60 30 06 (France)

Customer Support Portal: <https://www.starwind.com/support>

Support Forum: <https://www.starwind.com/forums>

Sales: sales@starwind.com

General Information: info@starwind.com



StarWind Software, Inc. 100 Cummings Center Suite 224-C Beverly MA 01915, USA
www.starwind.com ©2024, StarWind Software Inc. All rights reserved.