

# StarWind RAM Disk: Installation Guide

2024

TECHNICAL PAPERS



## Trademarks

“StarWind”, “StarWind Software” and the StarWind and the StarWind Software logos are registered trademarks of StarWind Software. “StarWind LSFS” is a trademark of StarWind Software which may be registered in some jurisdictions. All other trademarks are owned by their respective owners.

## Changes

The material in this document is for information only and is subject to change without notice. While reasonable efforts have been made in the preparation of this document to assure its accuracy, StarWind Software assumes no liability resulting from errors or omissions in this document, or from the use of the information contained herein. StarWind Software reserves the right to make changes in the product design without reservation and without notification to its users.

## Technical Support and Services

If you have questions about installing or using this software, check this and other documents first - you will find answers to most of your questions on the [Technical Papers](#) webpage or in [StarWind Forum](#). If you need further assistance, please [contact us](#) .

## About StarWind

StarWind is a pioneer in virtualization and a company that participated in the development of this technology from its earliest days. Now the company is among the leading vendors of software and hardware hyper-converged solutions. The company’s core product is the years-proven StarWind Virtual SAN, which allows SMB and ROBO to benefit from cost-efficient hyperconverged IT infrastructure. Having earned a reputation of reliability, StarWind created a hardware product line and is actively tapping into hyperconverged and storage appliances market. In 2016, Gartner named StarWind “Cool Vendor for Compute Platforms” following the success and popularity of StarWind HyperConverged Appliance. StarWind partners with world-known companies: Microsoft, VMware, Veeam, Intel, Dell, Mellanox, Citrix, Western Digital, etc.

## Copyright ©2009-2018 StarWind Software Inc.

No part of this publication may be reproduced, stored in a retrieval system, or transmitted in any form or by any means, electronic, mechanical, photocopying, recording or otherwise, without the prior written consent of StarWind Software.

## Annotation

Relevant Products

StarWind RAM Disk

Purpose

The document provides an installation guide for StarWind RAM Disk, a virtual disk that resides entirely in random-access memory. It describes the steps to create a RAM Disk Device, including launching the control application, specifying parameters, and configuring options like formatting and automount.

Audience

The intended audience includes system administrators, IT professionals, and users who require high-performance storage solutions for temporary or cache files.

Expected Result

Upon following the guide, users should successfully install and configure the StarWind RAM Disk on their system. The RAM Disk will serve as a high-speed storage solution for temporary or cache files, improving overall system performance.

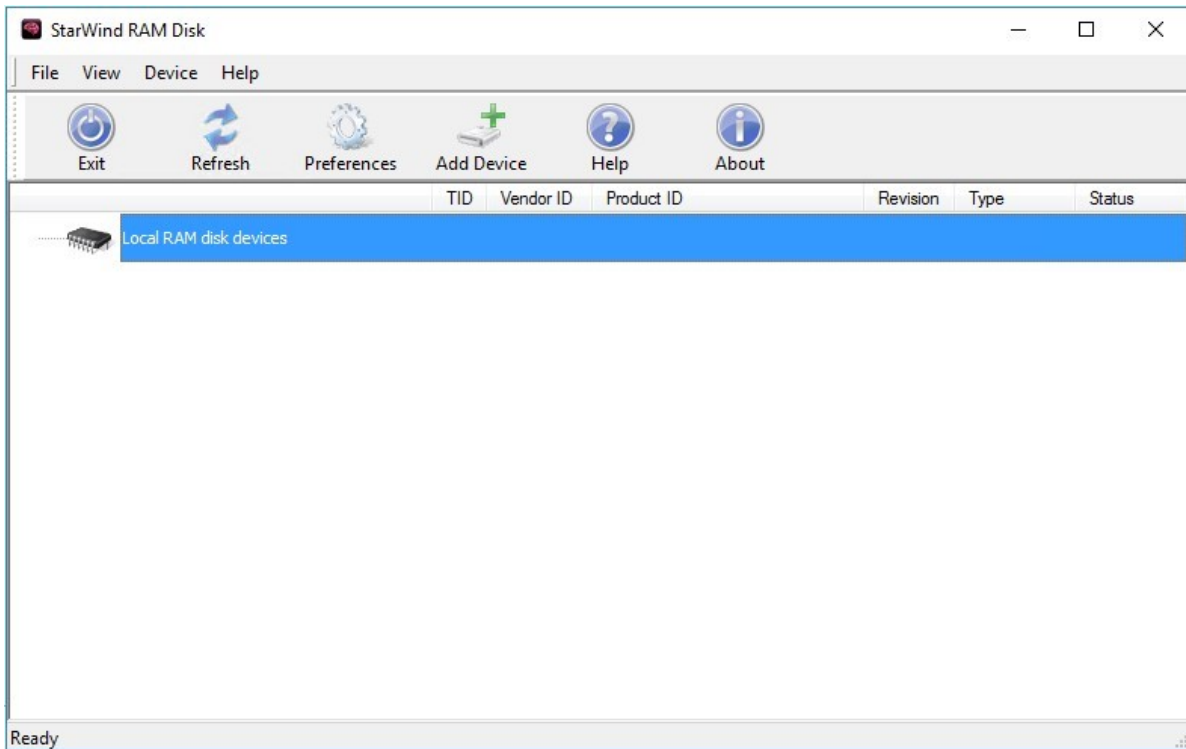
## Introduction To Starwind Ram Disk

StarWind RAM Disk device is an extremely fast virtual disk that completely resides in the random-access memory. Normally, RAM disk devices are used to store temporary/cache files, that require high system performance.

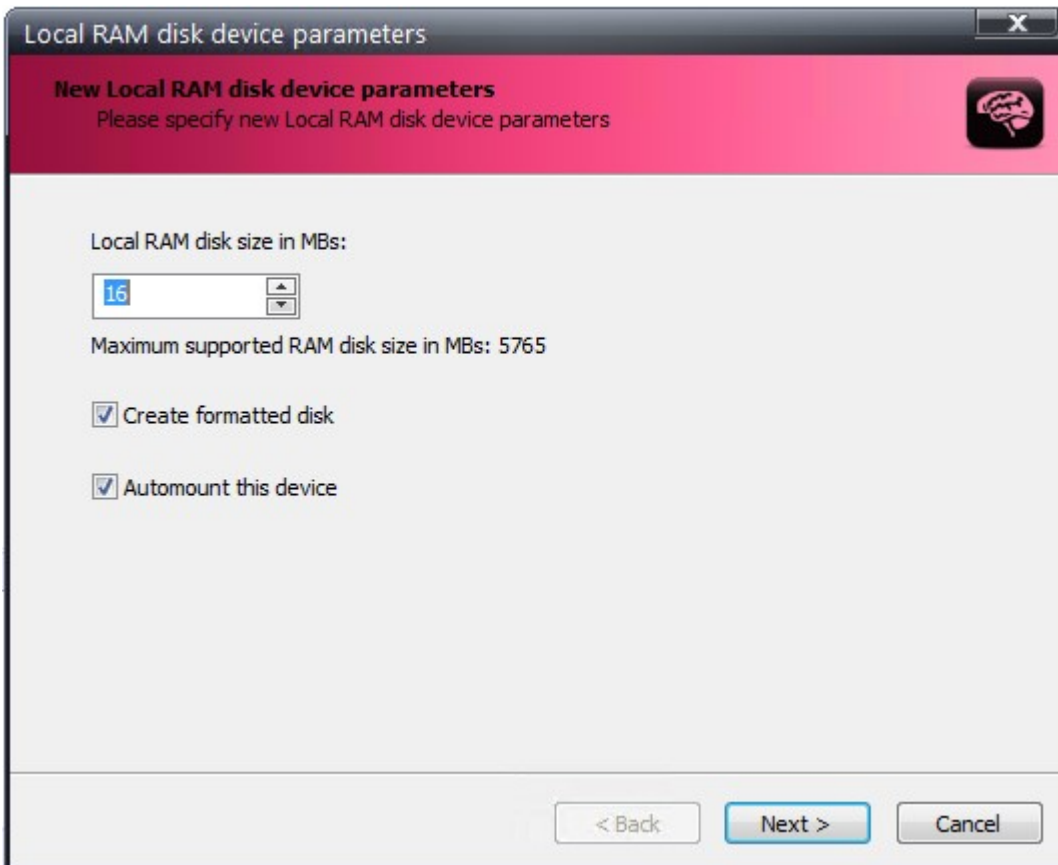
NOTE: The content of a RAM disk is lost when a host turns off/reboots or the Ram disk device is deleted.

## Creating A Ram Disk Device

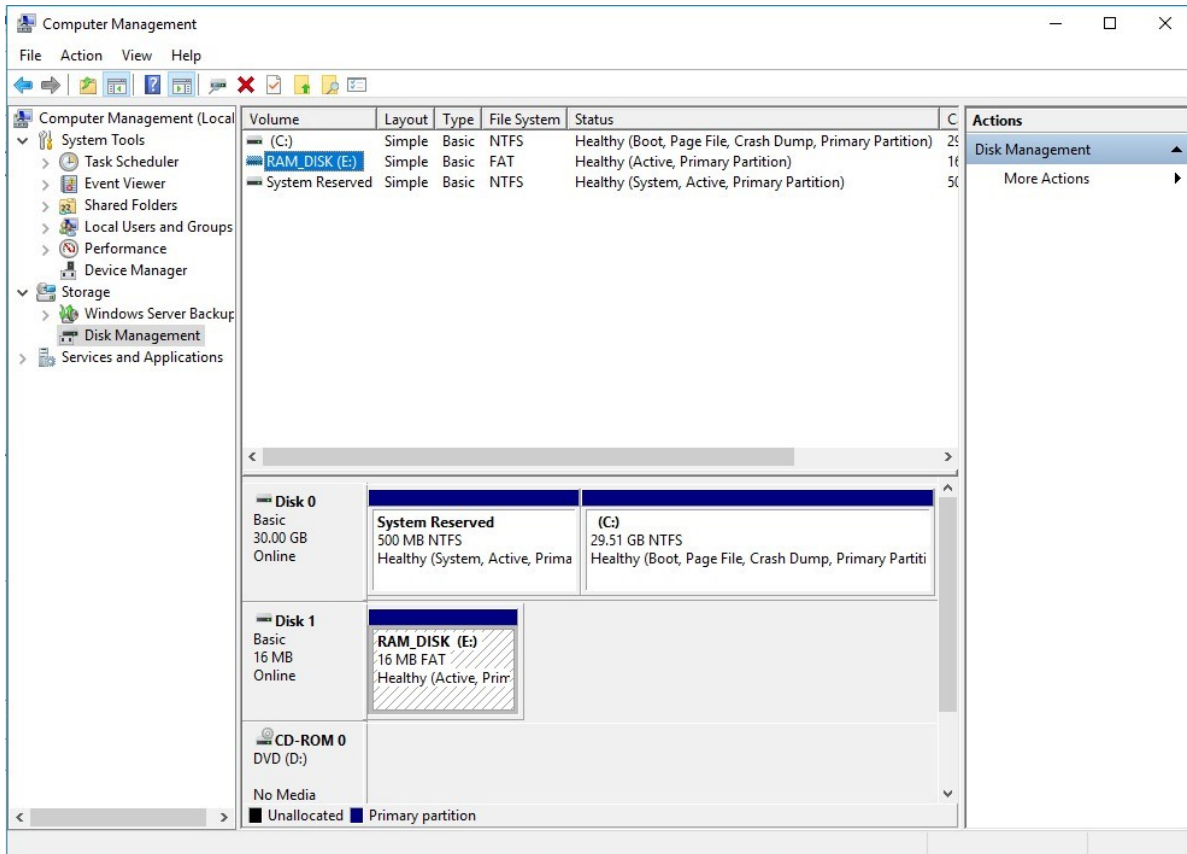
1. Launch the StarWind RAM Disk control application.



2. Select Add Device menu item from the Device drop-down menu or press the Add Device button on the application tray bar.
3. Specify the parameters of the Local RAM disk device to be added:  
NOTE: Local RAM disk size in MBs is the exact size of the disk that needs to be added (disk size should meet the amount of free memory).
4. Select Create formatted disk for the new disk to be initially formatted with FAT file system. Alternatively, the created virtual disk drive can be formatted manually.
5. Select Automount this device for the new disk to be automatically recreated after system restart. This option allows the Local RAM disk device to be available right after the system boots and Windows starts.










6. After the creation, the StarWind RAM Disk device appears as a new disk volume in the system.



## Conclusion

This installation guide for StarWind RAM Disk offers straightforward instructions for setting up a virtual disk in system memory, providing users with a high-speed storage solution for temporary or cache files. By utilizing RAM for storage, the guide helps users enhance their system's performance, especially for applications that require rapid data access.

## Contacts

US Headquarters	EMEA and APAC
 +1 617 829 44 95	 +44 2037 691 857 (United Kingdom)
 +1 617 507 58 45	 +49 800 100 68 26 (Germany)
 +1 866 790 26 46	 +34 629 03 07 17 (Spain and Portugal)
	 +33 788 60 30 06 (France)

Customer Support Portal: <https://www.starwind.com/support>

Support Forum: <https://www.starwind.com/forums>

Sales: [sales@starwind.com](mailto:sales@starwind.com)

General Information: [info@starwind.com](mailto:info@starwind.com)



StarWind Software, Inc. 100 Cummings Center Suite 224-C Beverly MA 01915, USA  
[www.starwind.com](http://www.starwind.com) ©2024, StarWind Software Inc. All rights reserved.